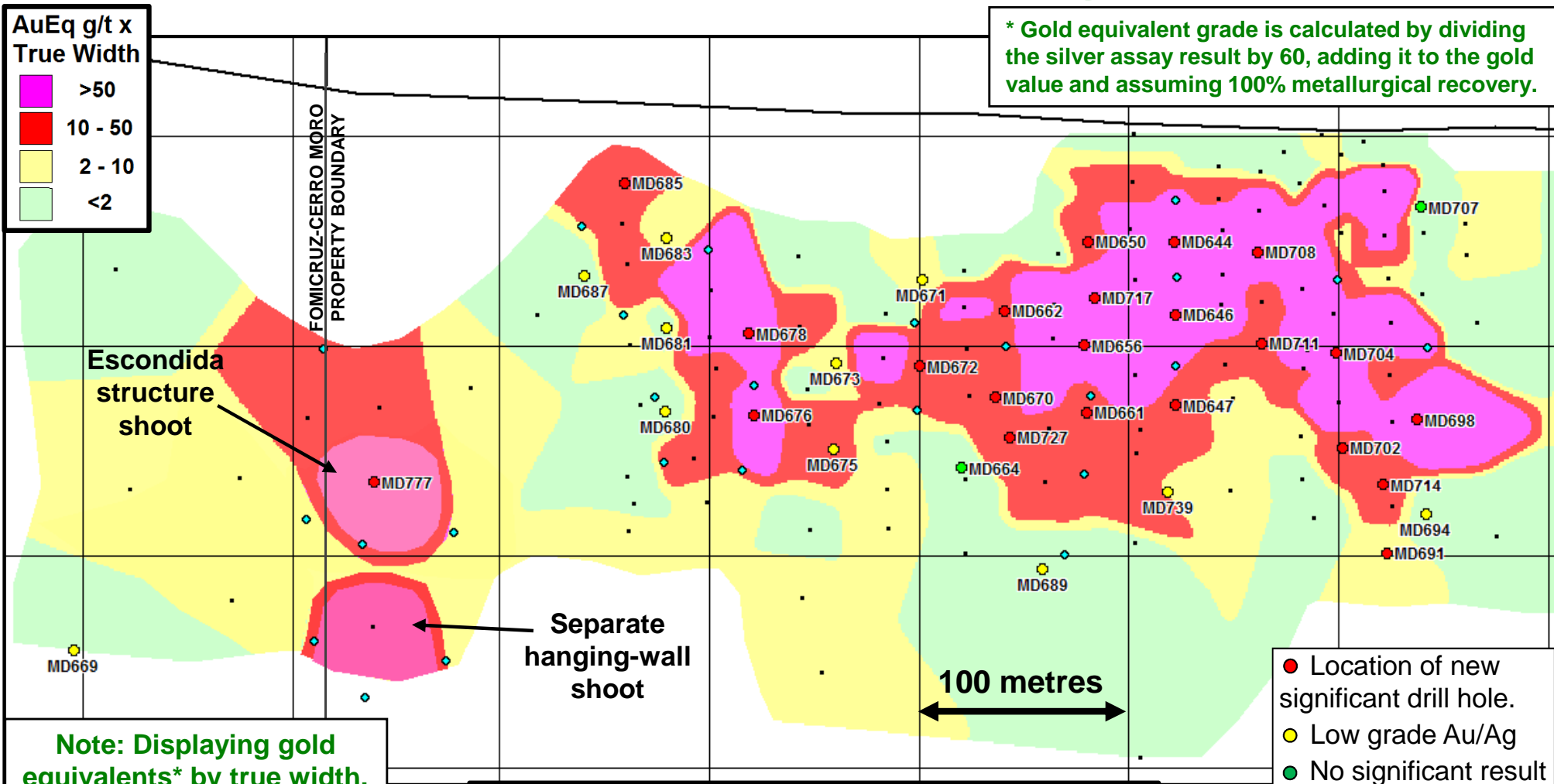
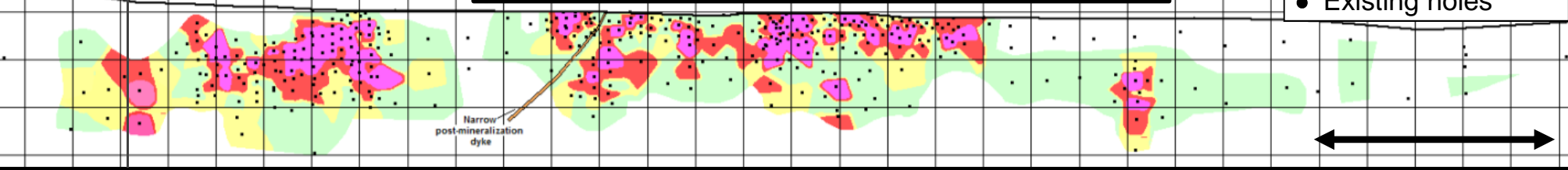


# Escondida Far West – Long Section

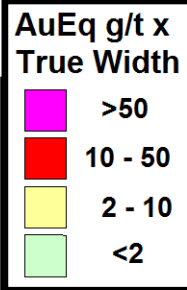


## ESCONDIDA LONG SECTION KEY



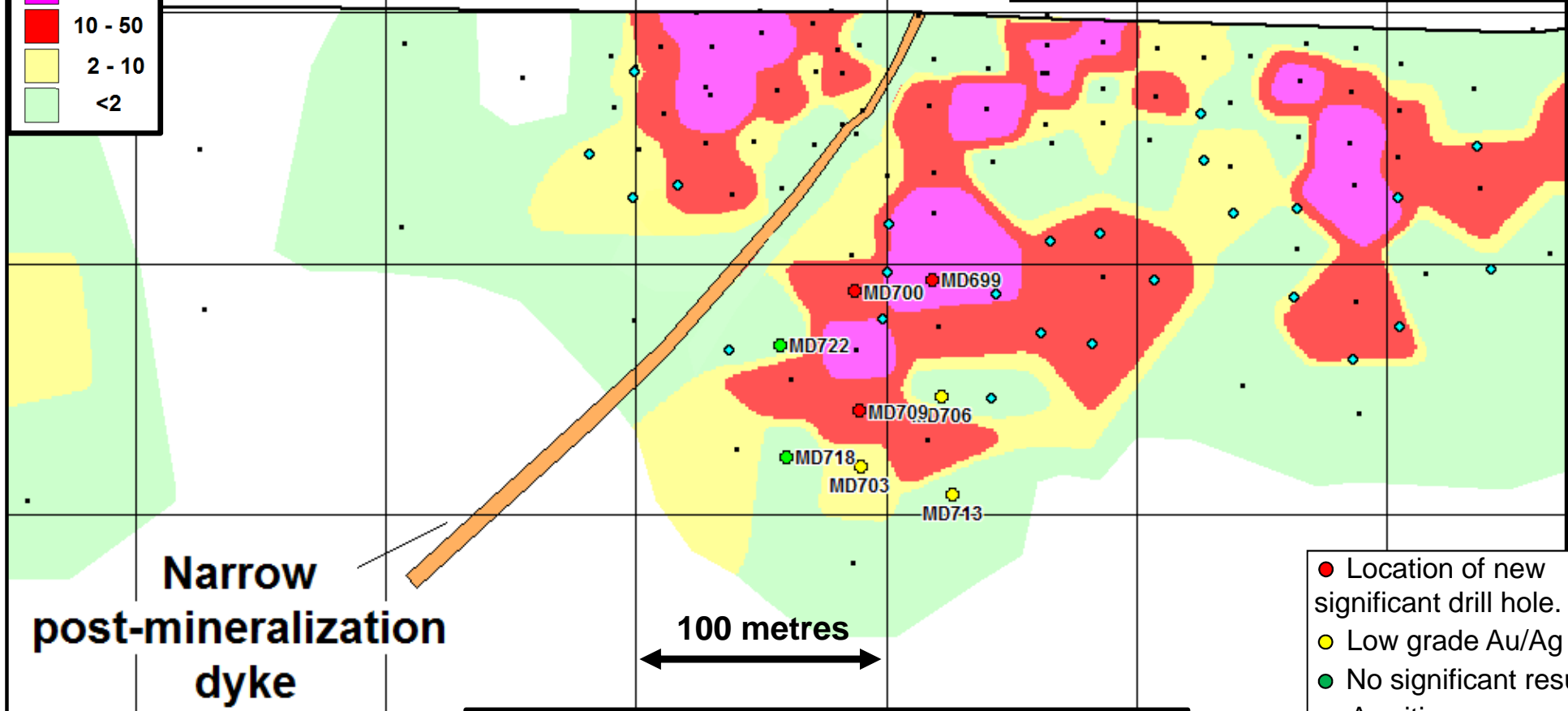
**Fomicruz    Far West    West    Central    East    Far East    500 metres**

# Escondida West – Long Section



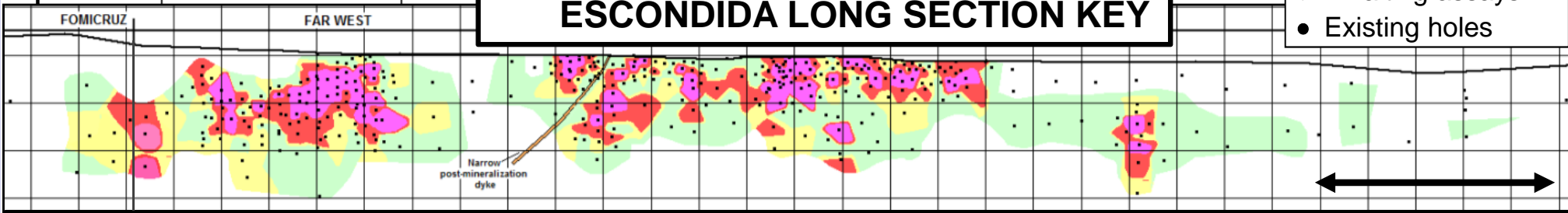
Note: Displaying gold equivalents\* by true width.

\* Gold equivalent grade is calculated by dividing the silver assay result by 60, adding it to the gold value and assuming 100% metallurgical recovery.



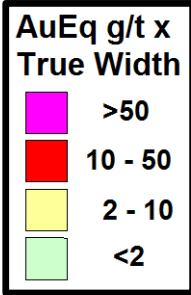
- Location of new significant drill hole.
- Low grade Au/Ag
- No significant result
- Awaiting assays
- Existing holes

## ESCONDIDA LONG SECTION KEY

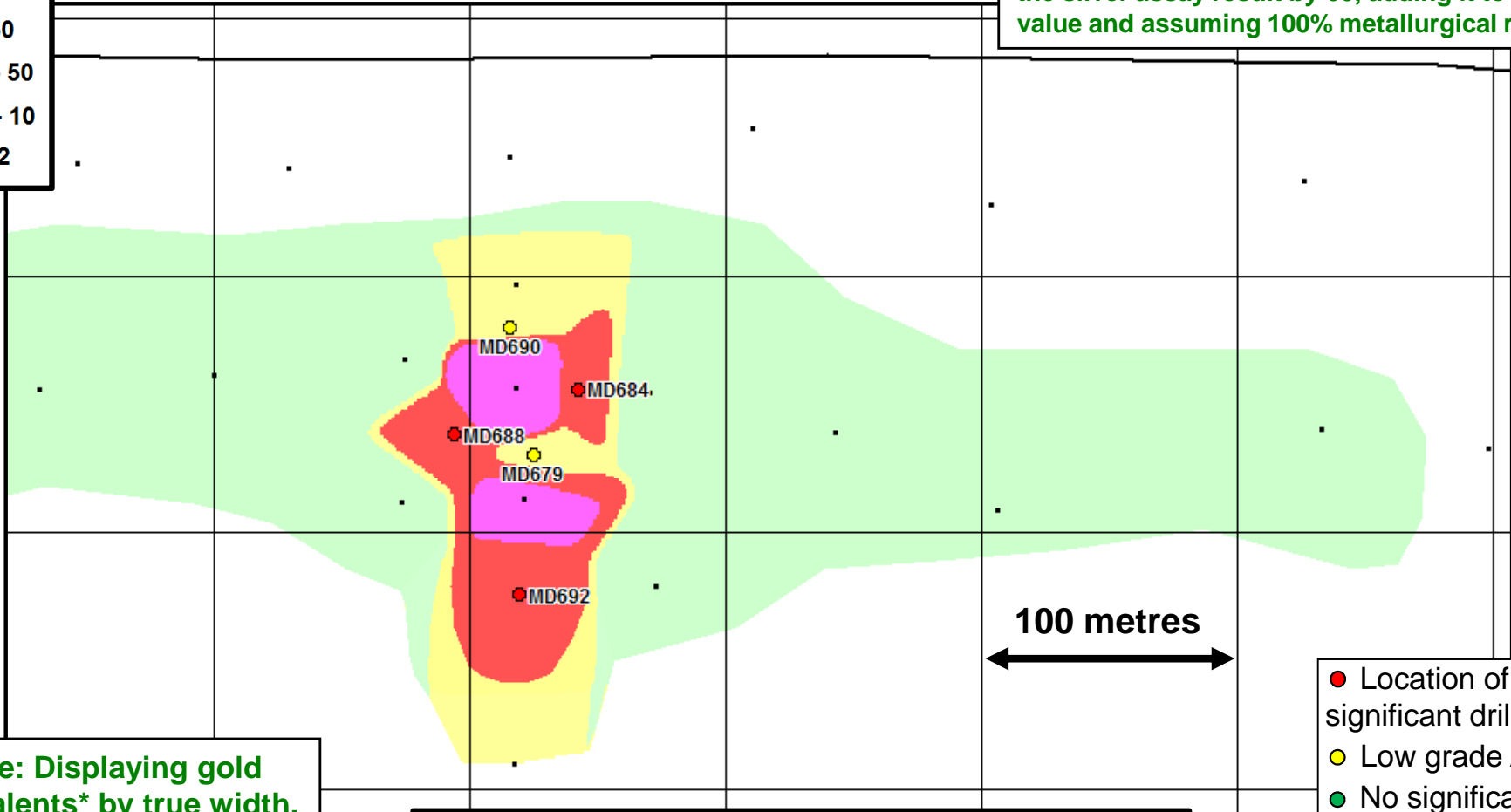


Fomicruz    Far West    West    Central    East    Far East    500 metres

# Escondida Far East – Long Section



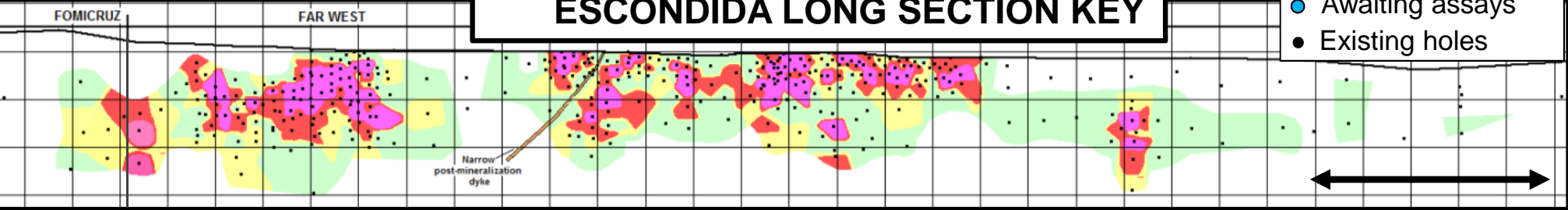
\* Gold equivalent grade is calculated by dividing the silver assay result by 60, adding it to the gold value and assuming 100% metallurgical recovery.



**Note: Displaying gold equivalents\* by true width.**

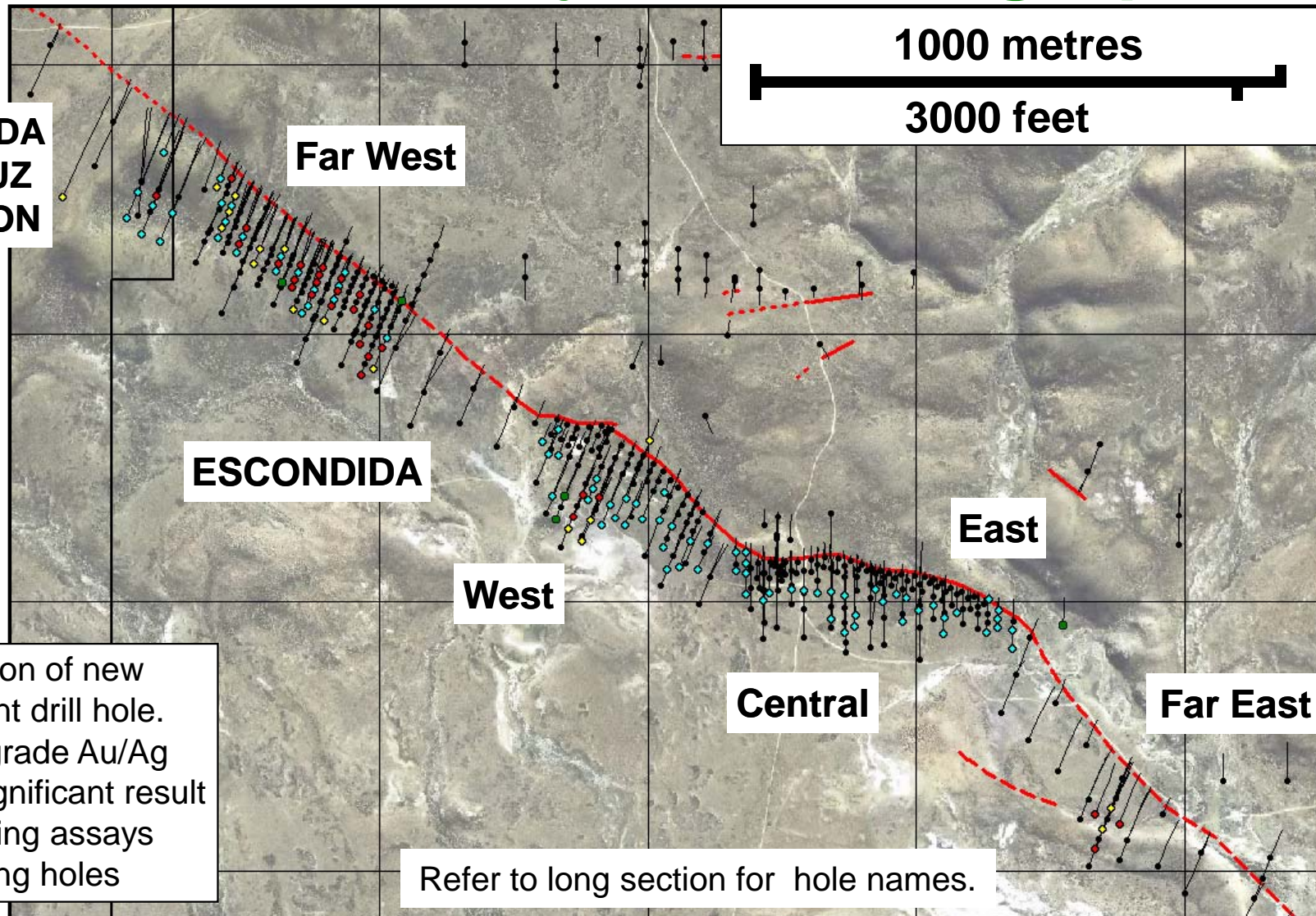
- Location of new significant drill hole.
- Low grade Au/Ag
- No significant result
- Awaiting assays
- Existing holes

## ESCONDIDA LONG SECTION KEY



**Fomicruz    Far West    West    Central    East    Far East    500 metres**

# Cerro Moro Project – Drilling Update



**ESCONDIDA  
FOMICRUZ  
EXTENSION**

**Far West**

**ESCONDIDA**

**West**

**Central**

**East**

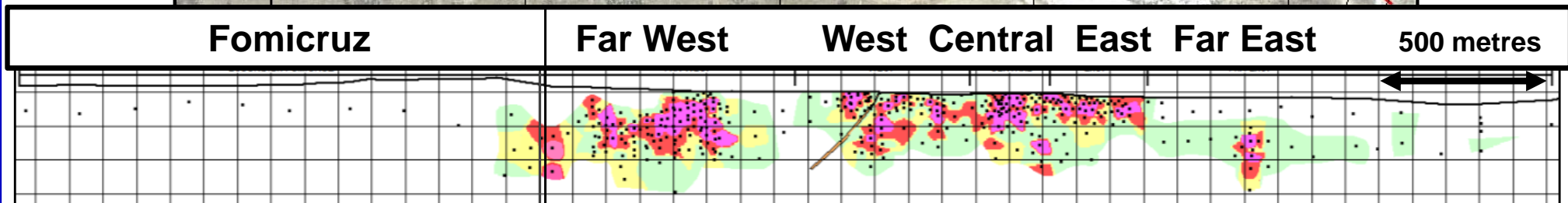
**Far East**

**1000 metres  
3000 feet**



- Location of new significant drill hole.
- Low grade Au/Ag
- No significant result
- Awaiting assays
- Existing holes

Refer to long section for hole names.



**Fomicruz**

**Far West**

**West Central**

**East**

**Far East**

**500 metres**